

How to install and configure Thinclient at home on Windows

(NOTE: getting USB pen drives working is beyond the scope of this document)

This guide is designed for Microsoft Windows XP, however the configuration and connection procedure is exactly the same on other operating systems.

Go to the NoMachine website:

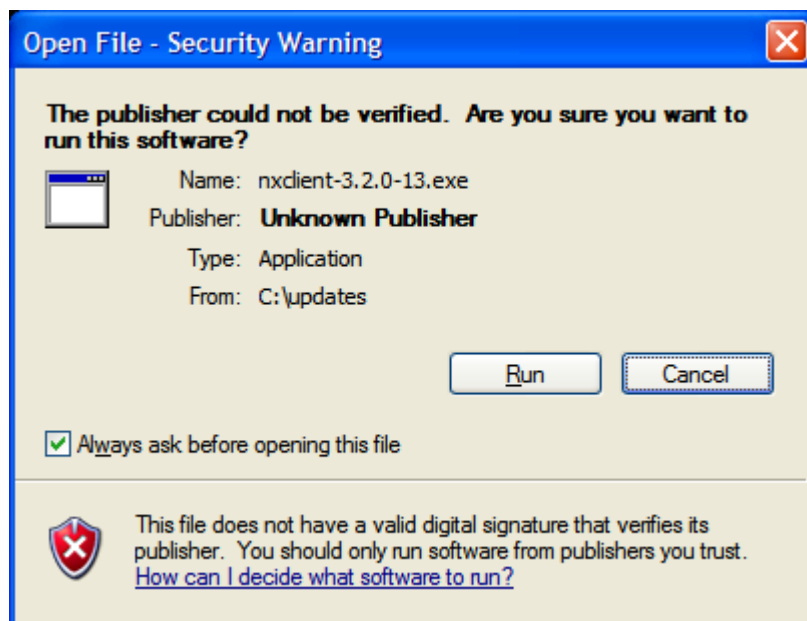
www.nomachine.com/download.php

Select and download 'NX Client for Windows'



When downloaded, run the file (current version at time of writing is 3.2.0-13) the NX Setup Wizard will take you through the installation. More detailed instructions can be found on :

www.nomachine.com/documents/client/install.php

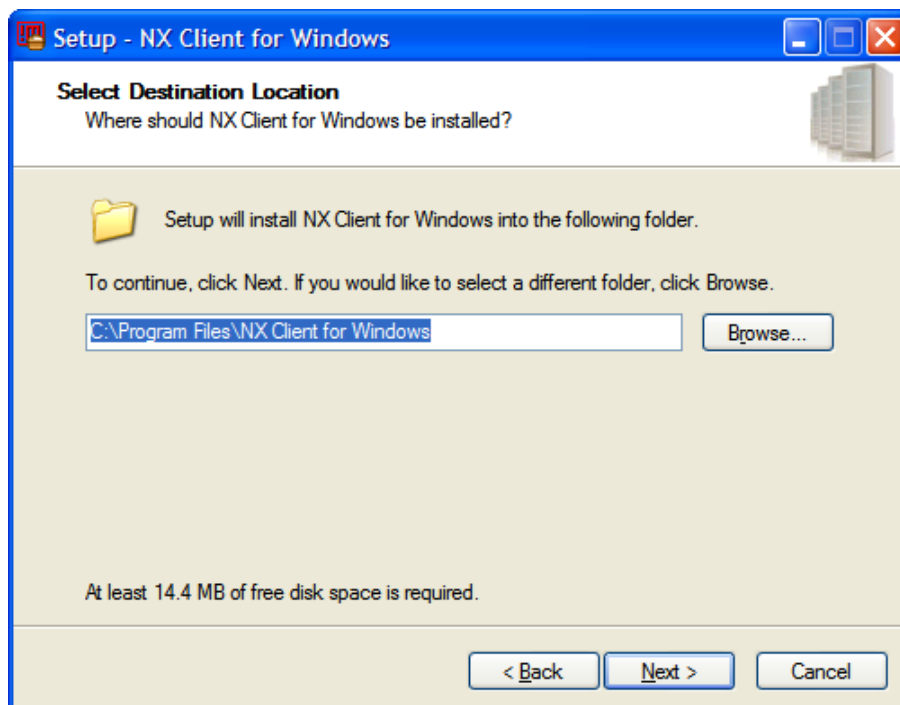


Click 'Run'



Click 'Next':

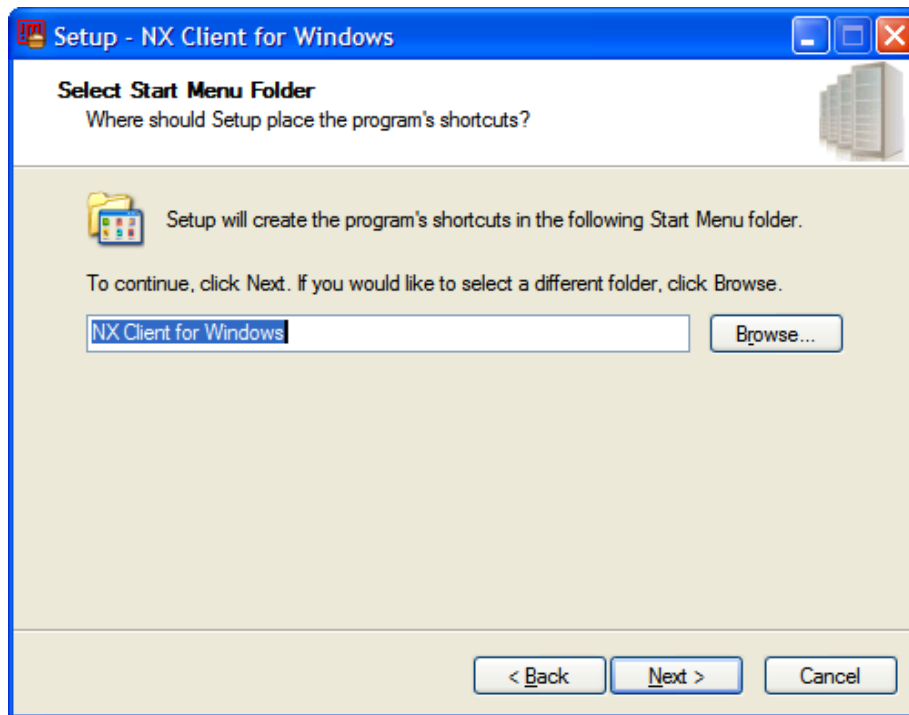
Step 1



Select where to install NX Client and confirm by clicking on the 'Next' button.

Step 2

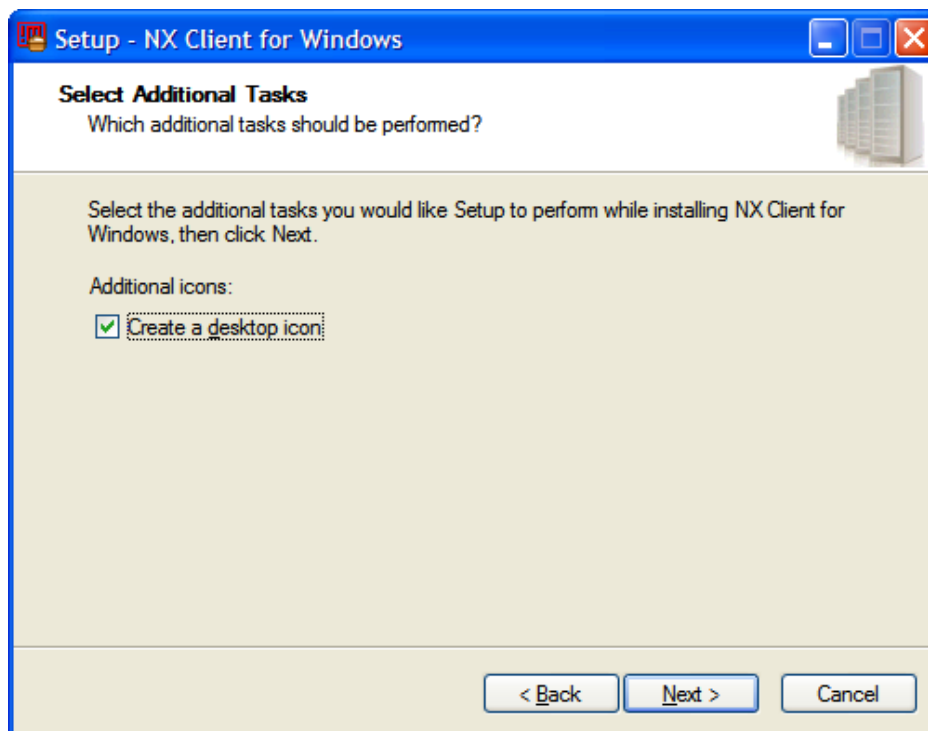
The Setup Wizard will allow you to create the program shortcut in the Start Menu by default or in any folder of your choice.



To proceed, click on the 'Next' button as usual.

Step 3

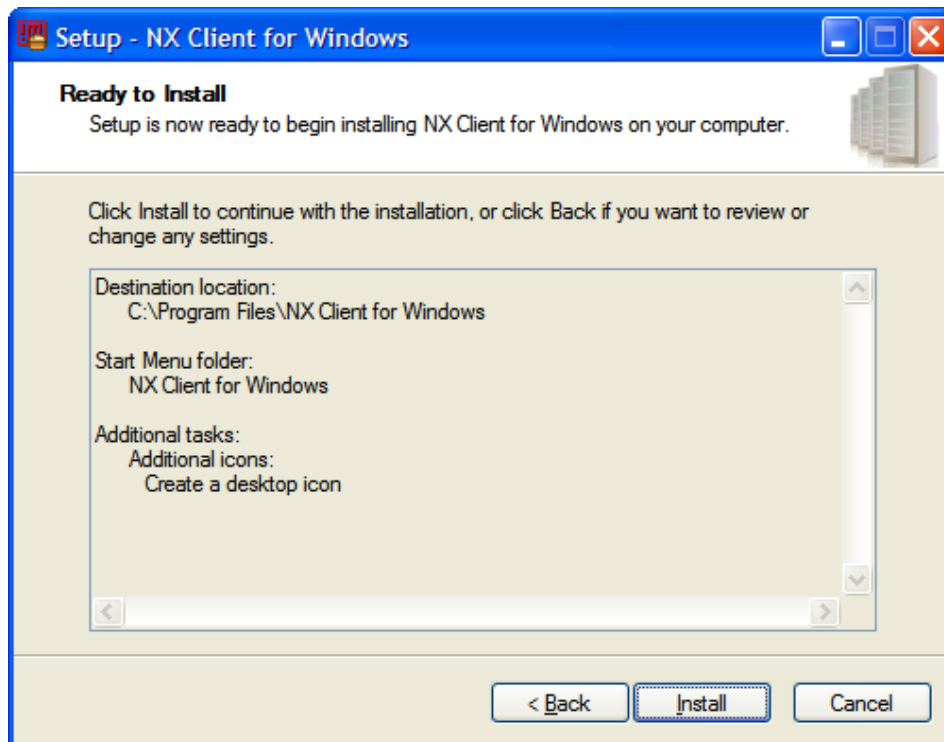
A further dialog will enable you to create an additional shortcut to the application on your desktop.



Confirm according to your personal preference.

Step 4

The final dialog will ask you to confirm the installation of NX Client on your machine.



Click 'install' and let the installation complete.



Now start the NX Client:

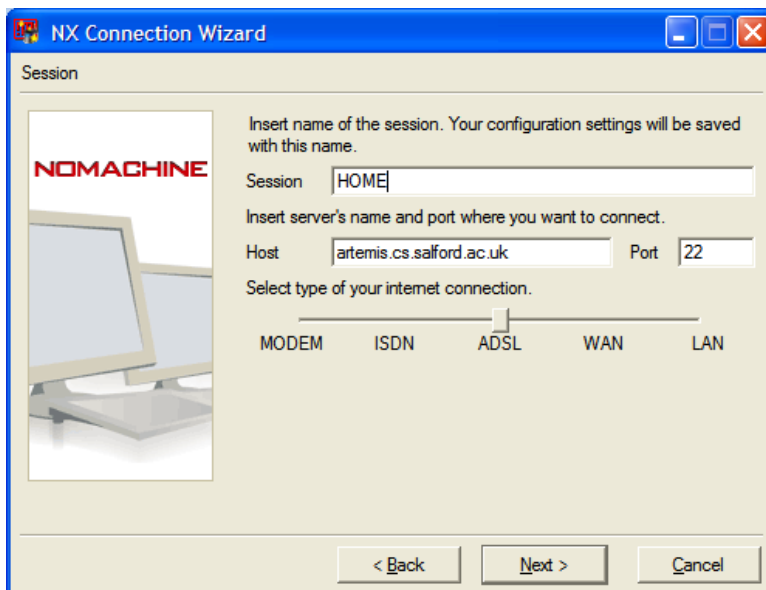


The first time you run it it will take you through the wizard:-

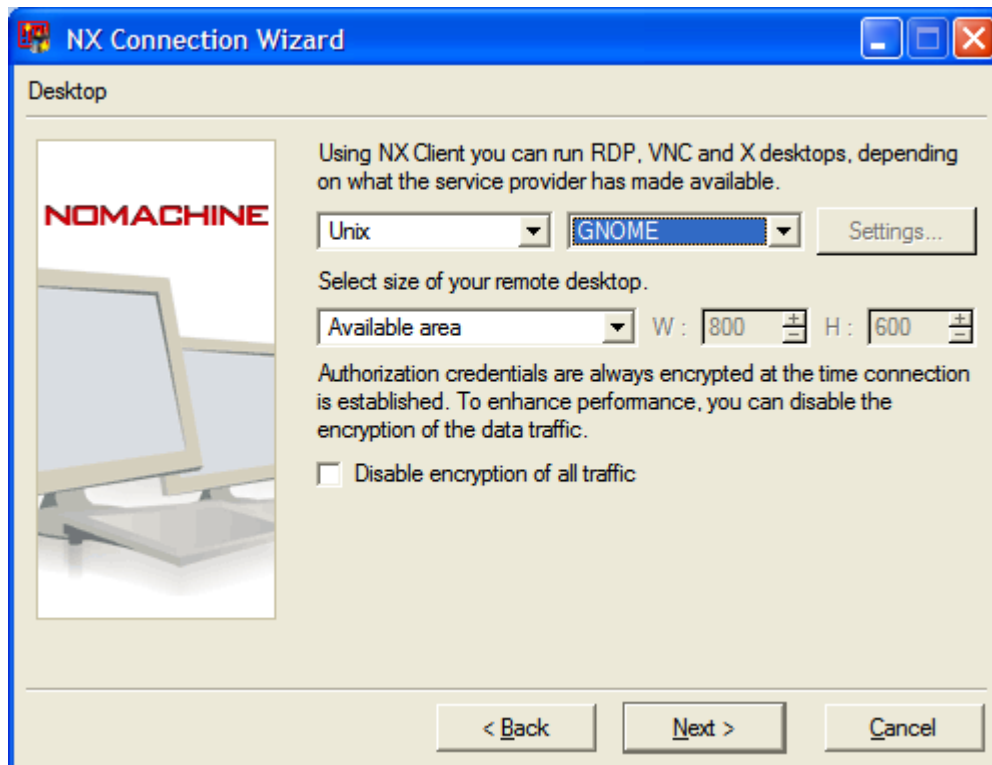


Click 'next':

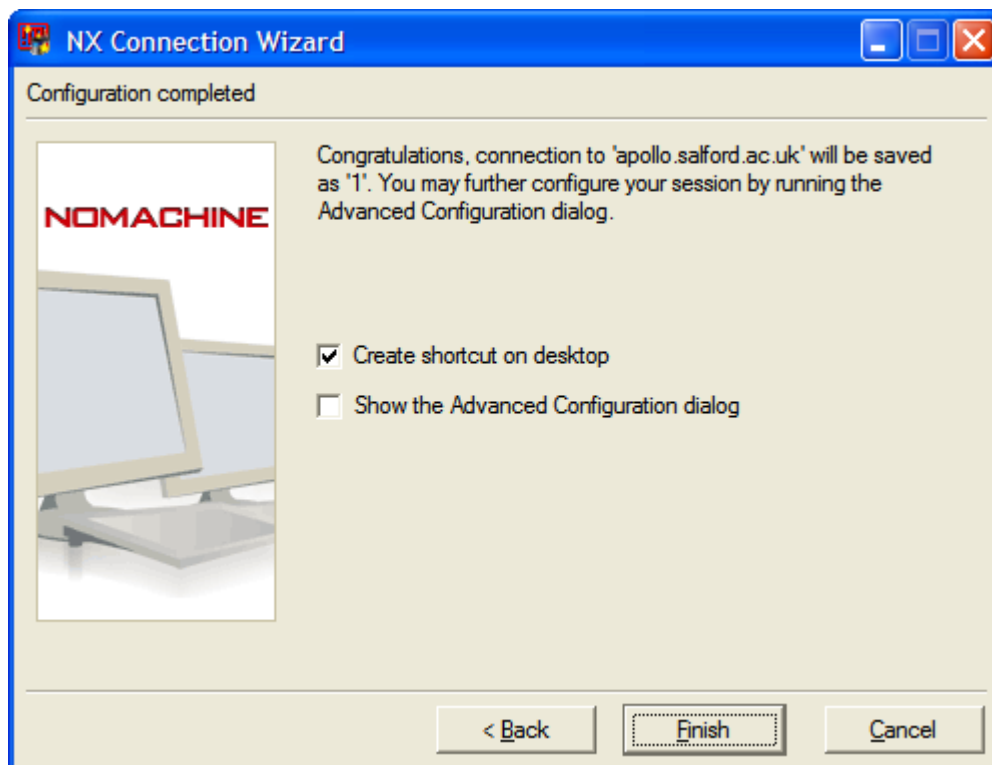
Choose a name for your session and enter the details using either **'apollo.cs.salford.ac.uk'** or **'artemis.cs.salford.ac.uk'**



Leave the Port and ADSL as they are. Click 'next':

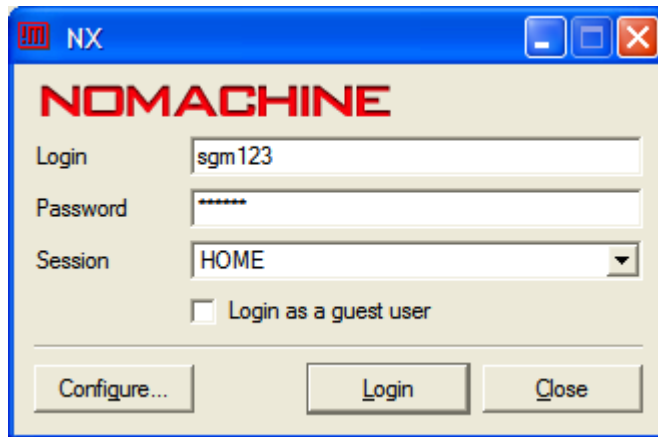


Select **GNOME** and Click 'Next':



Click 'Finish'

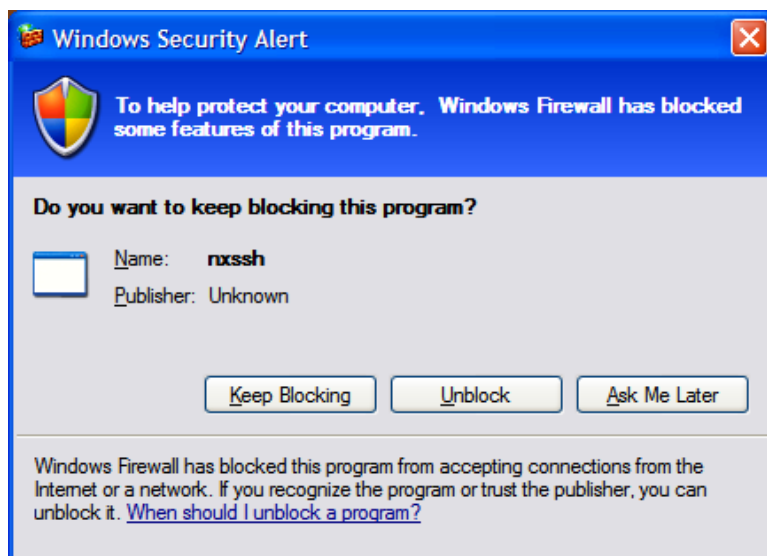
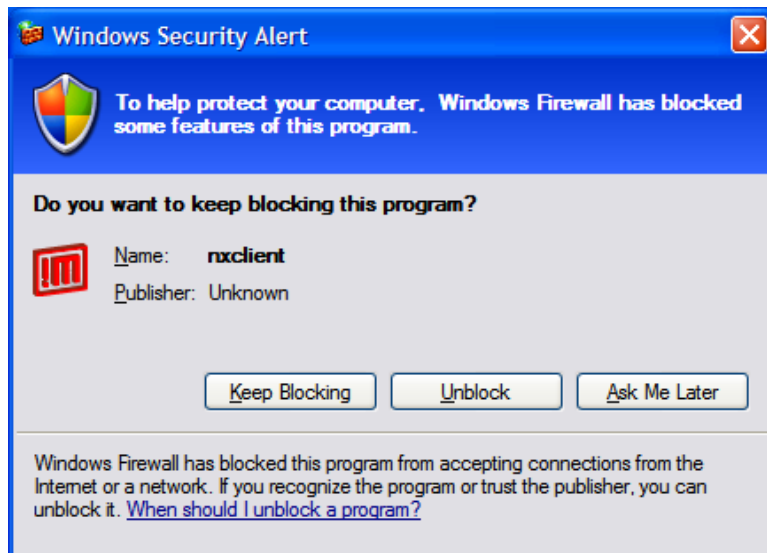
Enter you logon details:



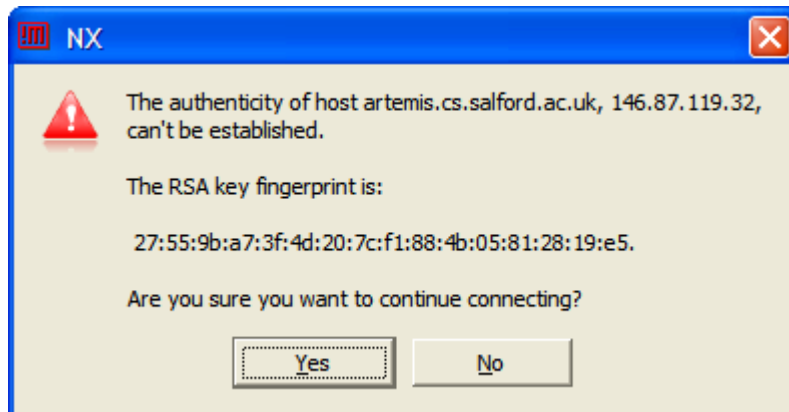
The image shows a login dialog box titled "NOMACHINE" with a blue header bar. It contains three input fields: "Login" with the text "sgm123", "Password" with masked characters "*****", and "Session" with a dropdown menu set to "HOME". Below these fields is a checkbox labeled "Login as a guest user" which is currently unchecked. At the bottom of the dialog are three buttons: "Configure...", "Login", and "Close".

Press Login:

If the following Firewall message(s) appear, press 'Unlock'



If this windows pops up, press 'Yes'



And if you see this windows click 'resume'

